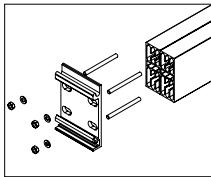
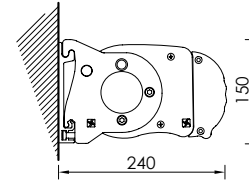


KE ANTALIA B35

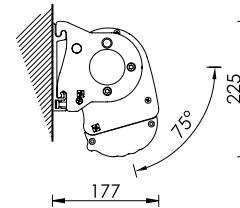
per aumenti TESSUTO e RAL vedi pagine 106/115 - For fabric and RAL increases see at pages 106/115
 Augmentation TISSU et RAL voir pages 106/115 - Für Aufpreise für RAL und Stoffe S. seiten 106/115



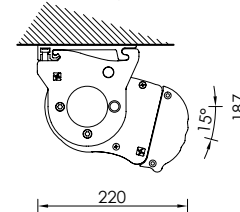
Installazione a parete
Wall installation



Installazione a parete 75°
Wall installation 75°



Installazione a soffitto 15°
Ceiling installation 15°



Installazione a soffitto 90°
Ceiling installation 90°

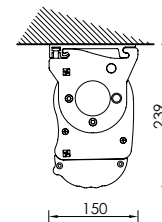


Diagramma di copertura a parete - Wall covering diagram

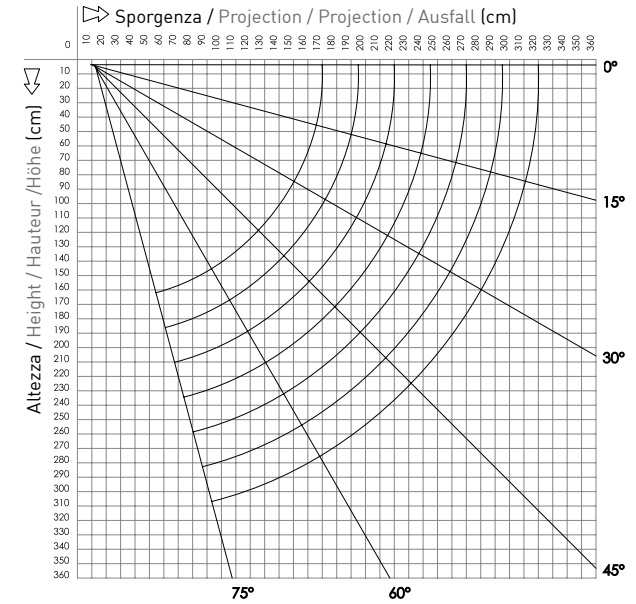
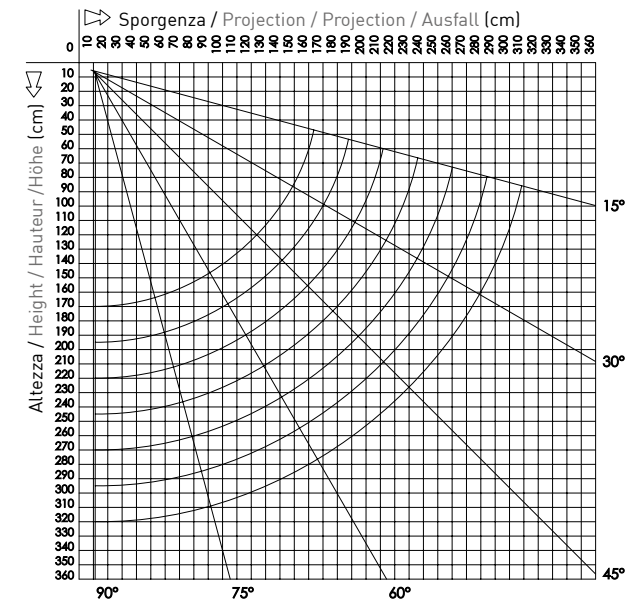


Diagramma di copertura a soffitto - Ceiling covering diagram



! Tessuto saldato di serie (eccetto Liberty, Panama, Resinati) - Fabric welded as standard (except Liberty - Panama - waterproof fabrics)
 Toile soudée (sauf Liberty, Panama, Imperméables) - Stoff serienmäßig geschweißt (außer Liberty - Panama - wasserdichte Stoffe)

Ingombri minimi della tenda finita - 1 coppia bracci
 Minimum awning encumbrances - 1 pair arms
 Encombrentes minimum du store fini - 1 pair bras
 Minimaler Ausmaß der fertigen Markise - 1 Paar Arme

cm	↔
↻	2 BRACCI
160	191
185	216
210	241
235	266
260	291
310	341

**POLIESTERE
POLYESTER**
 solo + 4%
 only + 4%

